



The Future of Hanna:

Expanded Impact,
Transformative Care,
and Greater Support
for Youth, Families,
and the Community

Strengthening Our Commitment to Trauma-Impacted Youth

Since 1945, Hanna has welcomed more than 4,000 youth in need from Sonoma County, Northern California, and beyond. We are a place where those who have experienced trauma and adversity can find resilience and success through our full-time residential treatment and school programs. Our goal is to provide students and their families with the tools and support they need to heal, regain and build trust, and become responsible, caring, and productive adults.

Over the last 75 years, we have grown and transformed our work many times to better

serve our students and community, and to keep pace with new clinical insights and practices. We have expanded our programming, refined our practices, and created a community-focused institute for trauma prevention and care. Now, as we reimagine the future of Hanna, we will focus on new ways to broaden our impact, further innovate our approach, and create a world where every individual grows up resilient and healthy, regardless of their circumstances.

Establishing a Continuum of Care

Trauma is a public health crisis. Adverse Childhood Experiences (ACEs) and traumatic events that occur in childhood are linked to dangerous behaviors, poor long-term health, and negative life outcomes. More than 60 percent of Californians report experiencing at least one ACE before the age of 18, and approximately one in four Californians report having three or more. These experiences disproportionately impact low-income families and people of color.

Through our work we have seen an increasing need for a wider range of services to support our most vulnerable populations, yet treatment and support resources for these communities are severely limited. From a greater need for mental health and trauma-informed care in Sonoma County, to a growing gap in the education, support, and housing available for youth from at-risk situations, Hanna is uniquely positioned to provide access to these life-changing services throughout our region.

Through this expansion, we will create a continuum of care — an integrated system that provides a comprehensive array of mental health services spanning different levels of care — one that will benefit all our students, families, and neighbors.





Multiplying Our Impact for a Healthier Sonoma County

Beginning in 2021, we are embarking on a five-year journey to offer greater support and services for youth from at-risk situations and our neighbors through new and improved facilities, expansion of programs and offerings, and increased educational opportunities. Our upcoming projects include:

Creating a Mental Health Hub

In Sonoma County, trauma-informed treatment and support resources for underserved youth and their families are severely limited. In addition, there is a need for greater access to basic mental health services. A new mental health hub housed on Hanna's campus will create the space to serve more families and young people in our work, while also addressing the growing gap in services in Northern California.

We will create an integrated, full-service facility leveraging our expertise in trauma-specific services to address the mental health needs of our community. Hanna's Mental Health Hub will be open seven days a week and staffed with therapists who are trained to offer counseling, treatment, and support, including:

- Prevention and early intervention services
- Individual, group, and family therapy
- Evidence-based practices designed to specifically target trauma-induced symptoms
- Cutting-edge treatment using neurophysiology science
- Long-term and short-term therapy services
- Culturally responsive care
- Cognitive and socioemotional assessments
- Marijuana and alcohol misuse programs
- Healing- and resiliency-building after school programs and weekend activities

We plan to open our Mental Health Hub in Summer 2022.



Growing Hanna's Special Education Program for Students with Emotional Needs

Our supportive and specialized educational environment is a place where growth happens. Each Hanna student is given the personalized care and attention they need to develop individually and academically. Our years of experience and research show that supporting youth with special needs changes the trajectory of their lives, and we have the data to back it up.

Across Sonoma County and Northern California, there is a growing need for education services for students with special emotional needs — one that Hanna is uniquely positioned to serve. Starting in 2022, we will strengthen our services to these students in both our on-campus residential programs and at Hanna School. To do this, we will:

- Upgrade our campus infrastructure to provide an even greater quality of care for students with special emotional needs
- Designate group homes for students with special emotional needs and which can provide trauma-informed residential services for students with emotional disturbances who are attending Hanna School
- Update our classroom technology to better serve our growing student population
- Build out our resources and counseling services for special education students

Preparing Students for Living-Wage Jobs through Career Technical Education

At Hanna, we want all our students to discover their passions and attain the type of preparation that will ultimately help them find success in meaningful employment beyond graduation. For

some, that means pursuing alternatives to a four-year university through technical or vocational trades. To accommodate these learners and establish new pathways to living-wage jobs, we will implement Career Technical Education (CTE) pathways and specialized vocational training opportunities into our academic curriculum starting in 2022/23.

These curriculum enhancements will provide access to the skills, knowledge, and training needed to be competitively positioned for evolving careers. In partnership with local trade associations, career organizations, and employers, we will design and implement curriculum that allows students to earn CTE certifications while enrolled at Hanna, followed by apprenticeship and internship opportunities during their senior year. Through close collaboration with local organizations, we'll ensure that students are receiving the technical education and skills-training that meet the growing workforce needs of our broader Sonoma community and prepare them for in-demand jobs. In addition to supporting Hanna students, this program will also be offered to transitional-aged foster youth on campus.

Capacity Building, Support Training, and Programming for Sonoma County

Hanna is committed to serving Sonoma County and beyond through professional training and care resources benefiting young people, families, and regional employees. Much of this effort is led by our Hanna Institute, a nationally recognized, research-informed provider of trauma-informed care training dedicated to advancing communication, social justice, and trauma recovery. Over the last five years, we have equipped more than 2,000 local practitioners and community

members with certifications and skills in trauma prevention, assessment, and treatment.

With trauma-informed care gaining significant support in the mental health profession and a growing need for increased training, professional development resources, and programming to better prevent and treat trauma's harmful, long-lasting effects, we are focused on sharing our research and best-practices with our broader clinical and educational communities.

Over the next five years, we will expand Hanna's services to:

- Increase our capacity to serve more organizations and communities through training, consulting, and research through Hanna Institute
- Partner with thought leaders to explore and establish best practices to address the trauma and stress produced by systemic racism and cultural oppression
- Host innovative and immersive community events, conferences, and activities that build knowledge, nurture collaboration, and strengthen our collective capacity to prevent and treat trauma

Providing Residential Facilities and Support for Foster Youth

The number of California youth transitioning out of foster care at age 18 surpasses 4,500 annually — and that number continues to grow. While most foster children are placed with foster families, an increasing number need a higher level of short-term care in a residential setting before or during their foster placement. Foster youth who have experienced trauma often require a greater level of support and care than others. These children

need an environment where they can develop vital emotional regulation skills and process traumatic experiences.

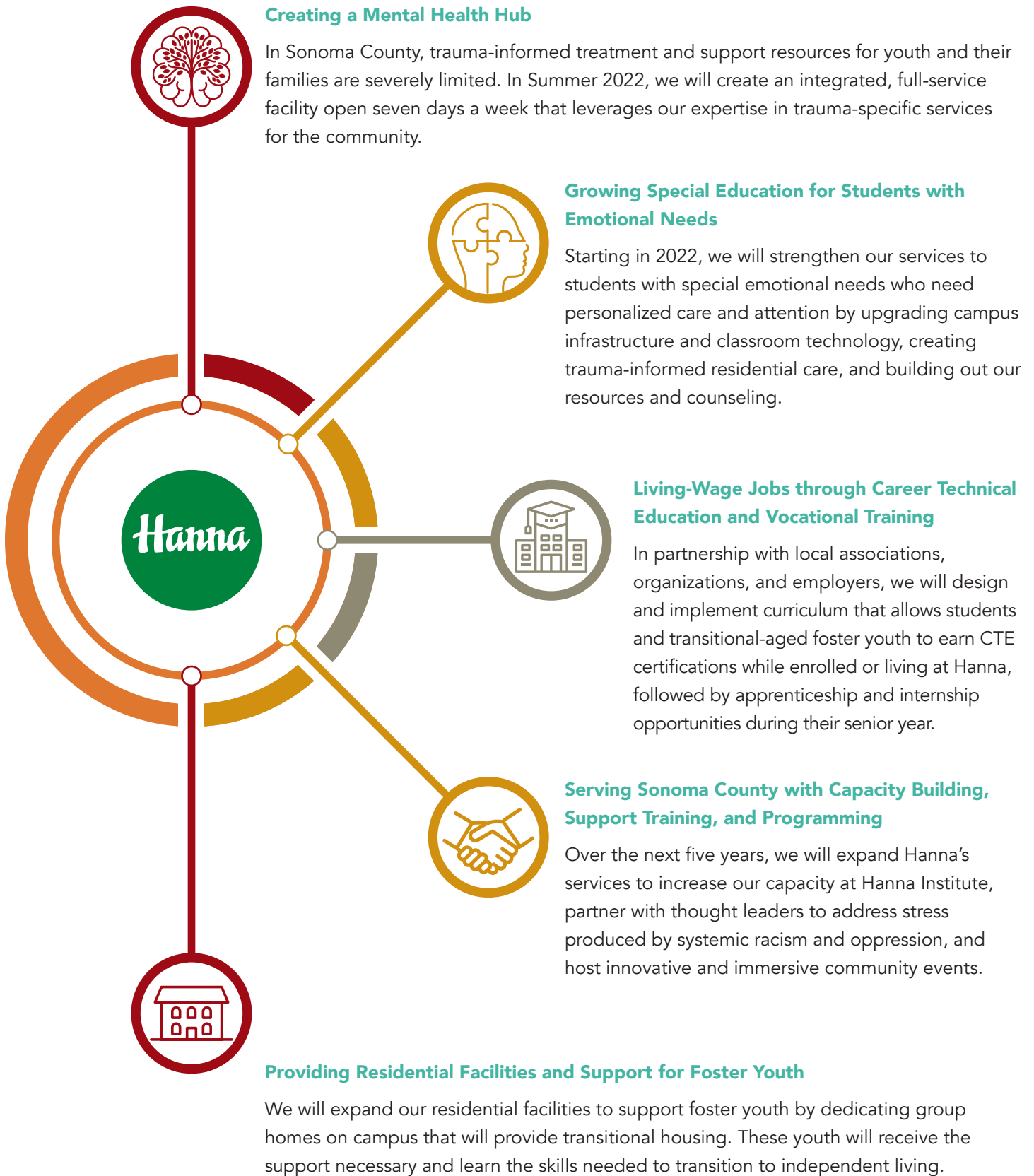
Unfortunately, Sonoma County and Northern California have a shortage of trauma-informed program resources, education, and housing availability. Without these critical services, California foster youth often find themselves without the skills they need to heal, grow, and thrive as adults. The data is both compelling and troubling. Thirty-five percent of former foster youth will experience homelessness; 20 percent will be arrested or incarcerated; 46 percent will complete high school; and only one percent will graduate from college.

With Hanna's expertise, resources, and commitment to serving youth from at-risk situations, we can change that trajectory. We will expand our residential facilities to support foster youth in our region by dedicating group homes on our campus that will provide transitional housing to youth ages 18 to 25. Foster youth will come to Hanna to receive the support and resources they need to develop emotional regulation and healthy coping mechanisms — as they transition to independent living.

In addition to the special emotional support these children will receive, foster youth at Hanna will also be able to participate in gaining technical career skills through vocational training. Youth who are in our residential facilities, regardless of whether they are a student at Hanna School, will have access to pre-apprenticeship and training partnerships to access the skills, knowledge, and training needed to be self-sufficient and competitively positioned for in-demand careers.

The Future of Hanna

Multiplied Impact, Transformative Care, and Greater Support



Help Us Transform More Lives

We are excited about the next chapter in Hanna's future and the transformative impact it will have on the lives of youth, families, and communities affected by trauma and adversity. However, our vision can only become a reality with the help of generous gifts from passionate supporters like you. Please consider joining our mission and contributing to one of the projects highlighted herein.

For more information about our plans, including specific areas of support, please contact:

Marisa Binder | Chief Development Officer | mbinder@hannacenter.org | 707.933.2588



**17000 Arnold Drive
Sonoma, CA 95476**

To learn more about Hanna
visit us online at hannacenter.org
or call 707.996.6767